



ELECTRONIC COPY

LABORATORY GROWN DIAMOND REPORT

January 29, 2022	
IGI Report Number	LG514290261
Description	LABORATORY GROWN DIAMOND
Shape and Cutting Style	OVAL BRILLIANT
Measurements	7.94 X 5.77 X 3.66 MM
GRADING RESULTS	
Carat Weight	1.05 CARAT
Color Grade	D
Clarity Grade	SI 2
ADDITIONAL GRADING INFORMATION	
Polish	EXCELLENT
Symmetry	EXCELLENT
Fluorescence	NONE
Inscription(s)	LABGROWN IGI LG514290261

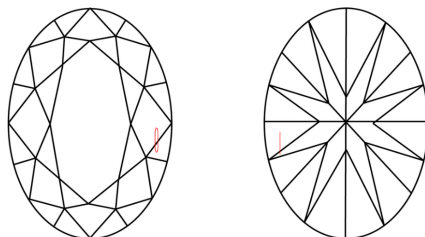
Comments: As Grown - No indication of post-growth treatment.

This Laboratory Grown Diamond was created by High Pressure High Temperature (HPHT) growth process.
Type II

Diagram illustrating the proportions of a diamond-shaped stone (LG514290261). The stone is labeled "Medium To Slightly Thick (Faceted)" and "Pointed". The proportions are defined by the following dimensions:

- Width: 57.5%
- Height: 63.4%
- Depth: 43.5%
- Table: 16%

CLARITY CHARACTERISTICS



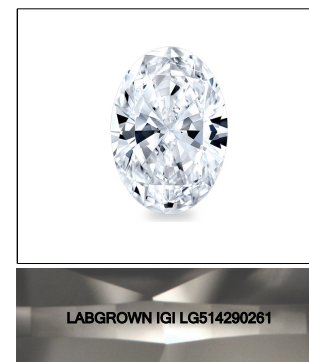
KEY TO SYMBOLS

Red symbols indicate internal characteristics.
Green symbols indicate external characteristics.

LABORATORY GROWN
DIAMOND REPORT

GRADING SCALES

COLOR GRADING SCALE	CL		NC		FT		VLT		LT	
	COLORLESS D-F		NEAR COLORLESS G-J		FAINT K-M		VERY LIGHT N-R		LIGHT S-Z	
CLARITY (10x) GRADING SCALE	FL IF		VVS		VS		SI		I	
	FLAWLESS INTERNALLY FLAWLESS		VERY VERY SLIGHTLY INCLUDED		VERY SLIGHTLY INCLUDED		SLIGHTLY INCLUDED		INCLUDED	



LASERSCRIBESM
Sample Image Used

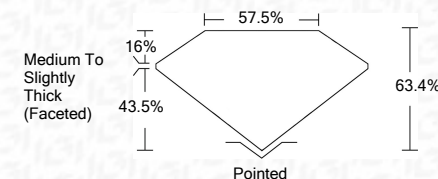


© IGI 2020, International Gemological Institute

FD - 10 20

LABORATORY GROWN DIAMOND REPORT

January 29, 2022	
IGI Report Number	LG514290261
Description	LABORATORY GROWN DIAMOND
Shape and Cutting Style	OVAL BRILLIANT
Measurements	7.94 X 5.77 X 3.66 MM
GRADING RESULTS	
Carat Weight	1.05 CARAT
Color Grade	D
Clarity Grade	SI 2



ADDITIONAL GRADING INFORMATION

Polish	EXCELLENT
Symmetry	EXCELLENT
Fluorescence	NONE
Inscription(s)	LABGROWN IGI LG514290261

Comments: As Grown - No indication of post-growth treatment.
This Laboratory Grown Diamond was created by High Pressure High Temperature (HPHT) growth process.
Type II



January 29, 2022	IGI Report No. IGB4290261
ROYAL BRILLIANT	
1.05 CARAT	
9.4 x 5.7 x 3.69 MM	
Color Grade	
Clarity Grade	
Depth	SI 2
Table	63.4%
Angle	57.5%
Griddle	Medium to Slightly Thick (Preferred)
Fluorescence	Polished
Symmetry	EXCELLENT
Inscriptions(s)	EXCELLENT
Comments:	NONE
	LAGROWN IGI
	LBG54290261
As Grown - No indication of post-growth	
This Laboratory Grown Diamond was created by High Pressure High Temperature (HPHT) growth process.	

As Grown - No indication of post-growth treatment.