



INTERNATIONAL GEMOLOGICAL INSTITUTE

ELECTRONIC COPY

LABORATORY GROWN DIAMOND REPORT

LG523294155

IGI LABORATORY GROWN DIAMOND ID REPORT

April 21, 2022

IGI Report Number **LG523294155**

PEAR BRILLIANT

8.43 X 5.27 X 3.13 MM

| | |
|----------------|-----------------------------|
| Carat Weight | 0.84 CARAT |
| Color Grade | F |
| Clarity Grade | SI 1 |
| Polish | EXCELLENT |
| Symmetry | VERY GOOD |
| Fluorescence | NONE |
| Inscription(s) | LABGROWN IGI LG523294155 |

Comments: As Grown - No indication of post-growth treatment.
This Laboratory Grown Diamond was created by High Pressure High Temperature (HPHT) growth process.
Type II

LABORATORY GROWN DIAMOND REPORT

IGI LABORATORY GROWN DIAMOND IDENTIFICATION REPORT

April 21, 2022

IGI Report Number **LG523294155**

Description **LABORATORY GROWN DIAMOND**

Shape and Cutting Style **PEAR BRILLIANT**

Measurements **8.43 X 5.27 X 3.13 MM**

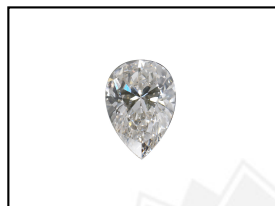
GRADING RESULTS

| | |
|---------------|------------|
| Carat Weight | 0.84 CARAT |
| Color Grade | F |
| Clarity Grade | SI 1 |

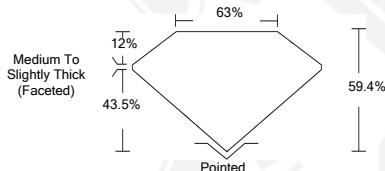
ADDITIONAL GRADING INFORMATION

| | |
|----------------|--------------------------|
| Polish | EXCELLENT |
| Symmetry | VERY GOOD |
| Fluorescence | NONE |
| Inscription(s) | LABGROWN IGI LG523294155 |

Comments: As Grown - No indication of post-growth treatment.
This Laboratory Grown Diamond was created by High Pressure High Temperature (HPHT) growth process.
Type II



LASERSCRIBESM
Sample Images Used



IGI LABORATORY GROWN DIAMOND ID REPORT

April 21, 2022

IGI Report Number **LG523294155**

PEAR BRILLIANT

8.43 X 5.27 X 3.13 MM

| | |
|----------------|-----------------------------|
| Carat Weight | 0.84 CARAT |
| Color Grade | F |
| Clarity Grade | SI 1 |
| Polish | EXCELLENT |
| Symmetry | VERY GOOD |
| Fluorescence | NONE |
| Inscription(s) | LABGROWN IGI LG523294155 |

Comments: As Grown - No indication of post-growth treatment.
This Laboratory Grown Diamond was created by High Pressure High Temperature (HPHT) growth process.
Type II



THIS DOCUMENT WAS PRODUCED WITH THE FOLLOWING SECURITY MEASURES: SPECIAL DOCUMENT PAPER, INK SCREENS, WATERMARK, BACKGROUND DESIGN, HOLOGRAM AND OTHER SECURITY FEATURES NOT LISTED AND DO EXCEED DOCUMENT SECURITY INDUSTRY GUIDELINES.

For Terms & Conditions and to verify this report, please visit www.igi.org