



INTERNATIONAL GEMOLOGICAL INSTITUTE

ELECTRONIC COPY

LABORATORY GROWN DIAMOND REPORT

LG547234989

LABORATORY GROWN DIAMOND REPORT

IGI LABORATORY GROWN DIAMOND IDENTIFICATION REPORT

September 20, 2022

IGI Report Number LG547234989

Description LABORATORY GROWN DIAMOND

Shape and Cutting Style PEAR BRILLIANT

Measurements 7.88 X 5.22 X 3.24 MM

GRADING RESULTS

Carat Weight 0.78 CARAT

Color Grade D

Clarity Grade VS 2

ADDITIONAL GRADING INFORMATION

Polish EXCELLENT

Symmetry VERY GOOD

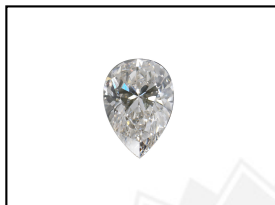
Fluorescence NONE

Inscription(s) LABGROWN IGI LG547234989

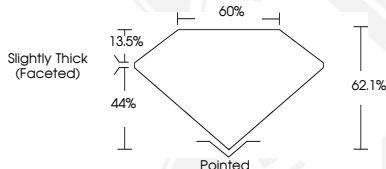
Comments: As Grown - No indication of post-growth treatment.

This Laboratory Grown Diamond was created by High Pressure High Temperature (HPHT) growth process.

Type II



LASERSCRIBESM
Sample Images Used



THIS DOCUMENT WAS PRODUCED WITH THE FOLLOWING SECURITY MEASURES: SPECIAL DOCUMENT PAPER, INK SCREENS, WATERMARK, BACKGROUND DESIGN, HOLOGRAM AND OTHER SECURITY FEATURES NOT LISTED AND DO EXCEED DOCUMENT SECURITY INDUSTRY GUIDELINES.

For terms & conditions and to verify this report, please visit www.igi.org

IGI LABORATORY GROWN DIAMOND ID REPORT

September 20, 2022

IGI Report Number LG547234989

PEAR BRILLIANT

7.88 X 5.22 X 3.24 MM

Carat Weight 0.78 CARAT

Color Grade D

Clarity Grade VS 2

Polish EXCELLENT

Symmetry VERY GOOD

Fluorescence NONE

Inscription(s) LABGROWN IGI LG547234989

Comments: As Grown - No indication of post-growth treatment.

This Laboratory Grown Diamond was created by High Pressure High Temperature (HPHT) growth process.

Type II

IGI LABORATORY GROWN DIAMOND ID REPORT

September 20, 2022

IGI Report Number LG547234989

PEAR BRILLIANT

7.88 X 5.22 X 3.24 MM

Carat Weight 0.78 CARAT

Color Grade D

Clarity Grade VS 2

Polish EXCELLENT

Symmetry VERY GOOD

Fluorescence NONE

Inscription(s) LABGROWN IGI LG547234989

Comments: As Grown - No indication of post-growth treatment.

This Laboratory Grown Diamond was created by High Pressure High Temperature (HPHT) growth process.

Type II