



INTERNATIONAL GEMOLOGICAL INSTITUTE

ELECTRONIC COPY

LABORATORY GROWN DIAMOND REPORT

LG553239657

LABORATORY GROWN DIAMOND REPORT

IGI LABORATORY GROWN DIAMOND IDENTIFICATION REPORT

November 17, 2022
IGI Report Number LG553239657
Description LABORATORY GROWN DIAMOND
Shape and Cutting Style PEAR BRILLIANT
Measurements 7.27 X 4.55 X 2.82 MM

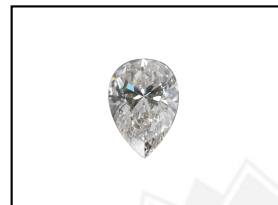
GRADING RESULTS

Carat Weight 0.53 CARAT
Color Grade E
Clarity Grade SI 1

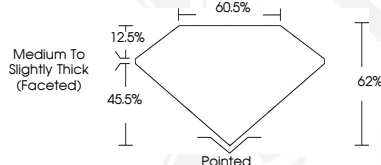
ADDITIONAL GRADING INFORMATION

Polish VERY GOOD
Symmetry GOOD
Fluorescence NONE
Inscription(s) LABGROWN IGI LG553239657

Comments: As Grown - No indication of post-growth treatment.
This Laboratory Grown Diamond was created by High Pressure High Temperature (HPHT) growth process.



LASERSCRIBESM
Sample Images Used



IGI LABORATORY GROWN DIAMOND ID REPORT

November 17, 2022
IGI Report Number LG553239657
PEAR BRILLIANT
7.27 X 4.55 X 2.82 MM
Carat Weight 0.53 CARAT
Color Grade E
Clarity Grade SI 1
Polish VERY GOOD
Symmetry GOOD
Fluorescence NONE
Inscription(s) LABGROWN IGI LG553239657

Comments: As Grown - No indication of post-growth treatment.
This Laboratory Grown Diamond was created by High Pressure High Temperature (HPHT) growth process.

IGI LABORATORY GROWN DIAMOND ID REPORT

November 17, 2022
IGI Report Number LG553239657
PEAR BRILLIANT
7.27 X 4.55 X 2.82 MM
Carat Weight 0.53 CARAT
Color Grade E
Clarity Grade SI 1
Polish VERY GOOD
Symmetry GOOD
Fluorescence NONE
Inscription(s) LABGROWN IGI LG553239657

Comments: As Grown - No indication of post-growth treatment.
This Laboratory Grown Diamond was created by High Pressure High Temperature (HPHT) growth process.



THIS DOCUMENT WAS PRODUCED WITH THE FOLLOWING SECURITY MEASURES: SPECIAL DOCUMENT PAPER, INK SCREENS, WATERMARK, BACKGROUND DESIGN, HOLOGRAM AND OTHER SECURITY FEATURES NOT LISTED AND DO EXCEED DOCUMENT SECURITY INDUSTRY GUIDELINES.

For terms & conditions and to verify this report, please visit www.igi.org