



INTERNATIONAL GEMOLOGICAL INSTITUTE

ELECTRONIC COPY

LABORATORY GROWN DIAMOND REPORT

LG561262650

LABORATORY GROWN DIAMOND REPORT

IGI LABORATORY GROWN DIAMOND IDENTIFICATION REPORT

December 27, 2022

IGI Report Number

LG561262650

Description LABORATORY GROWN DIAMOND

Shape and Cutting Style CUT CORNERED RECTANGULAR MODIFIED
BRILLIANT

Measurements 5.39 X 4.14 X 2.57 MM

GRADING RESULTS

Carat Weight 0.51 CARAT

Color Grade H

Clarity Grade VS 2

ADDITIONAL GRADING INFORMATION

Polish EXCELLENT

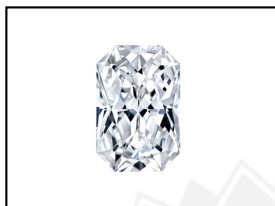
Symmetry VERY GOOD

Fluorescence NONE

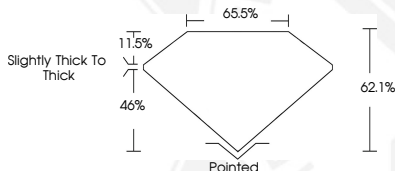
Inscription(s) LABGROWN (IGI) LG561262650

Comments: As Grown - No indication of post-growth treatment.
This Laboratory Grown Diamond was created by High Pressure High
Temperature (HPHT) growth process.

Type II
Faint Blue



LASERSCRIBE SM
Sample Images Used



IGI LABORATORY GROWN DIAMOND ID REPORT

December 27, 2022

IGI Report Number **LG561262650**

**CUT CORNERED RECTANGULAR
MODIFIED BRILLIANT**

5.39 X 4.14 X 2.57 MM

Carat Weight 0.51 CARAT

Color Grade H

Clarity Grade VS 2

Polish EXCELLENT

Symmetry VERY GOOD

Fluorescence NONE

Inscription(s) LABGROWN (IGI) LG561262650

Comments: As Grown - No
indication of post-growth
treatment. This Laboratory Grown
Diamond was created by High
Pressure High Temperature (HPHT)
growth process. Type II Faint Blue

IGI LABORATORY GROWN DIAMOND ID REPORT

December 27, 2022

IGI Report Number **LG561262650**

**CUT CORNERED RECTANGULAR
MODIFIED BRILLIANT**

5.39 X 4.14 X 2.57 MM

Carat Weight 0.51 CARAT

Color Grade H

Clarity Grade VS 2

Polish EXCELLENT

Symmetry VERY GOOD

Fluorescence NONE

Inscription(s) LABGROWN (IGI) LG561262650

Comments: As Grown - No
indication of post-growth
treatment. This Laboratory Grown
Diamond was created by High
Pressure High Temperature (HPHT)
growth process. Type II Faint Blue



THIS DOCUMENT WAS PRODUCED WITH THE FOLLOWING SECURITY MEASURES: SPECIAL DOCUMENT PAPER, INK SCREENS, WATERMARK, BACKGROUND DESIGN, HOLOGRAM AND OTHER SECURITY FEATURES NOT LISTED AND DO EXCEED DOCUMENT SECURITY INDUSTRY GUIDELINES.

For terms & conditions and to verify this report, please visit www.igi.org