



# INTERNATIONAL GEMOLOGICAL INSTITUTE

ELECTRONIC COPY

## LABORATORY GROWN DIAMOND REPORT

LG566331197

### IGI LABORATORY GROWN DIAMOND ID REPORT

January 30, 2023  
IGI Report Number **LG566331197**  
**CUT CORNERED RECTANGULAR  
MODIFIED BRILLIANT**  
**5.97 X 4.58 X 3.11 MM**  
Carat Weight 0.75 CARAT  
Color Grade D  
Clarity Grade SI 1  
Polish EXCELLENT  
Symmetry EXCELLENT  
Fluorescence NONE  
Inscription(s) LABGROWN (IGI) LG566331197

Comments: As Grown - No indication of post-growth treatment. This Laboratory Grown Diamond was created by High Pressure High Temperature (HPHT) growth process. Type II

## LABORATORY GROWN DIAMOND REPORT

### IGI LABORATORY GROWN DIAMOND IDENTIFICATION REPORT

January 30, 2023  
IGI Report Number LG566331197  
Description LABORATORY GROWN DIAMOND  
Shape and Cutting Style CUT CORNERED RECTANGULAR MODIFIED BRILLIANT  
Measurements 5.97 X 4.58 X 3.11 MM

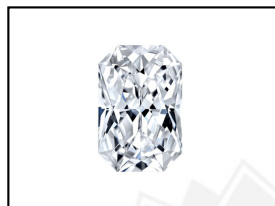
### GRADING RESULTS

Carat Weight 0.75 CARAT  
Color Grade D  
Clarity Grade SI 1

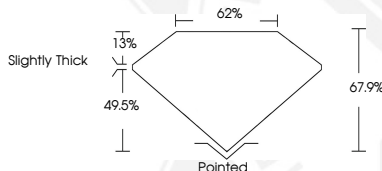
### ADDITIONAL GRADING INFORMATION

Polish EXCELLENT  
Symmetry EXCELLENT  
Fluorescence NONE  
Inscription(s) LABGROWN (IGI) LG566331197

Comments: As Grown - No indication of post-growth treatment. This Laboratory Grown Diamond was created by High Pressure High Temperature (HPHT) growth process. Type II



**LASERSCRIBE** SM  
Sample Images Used



THIS DOCUMENT WAS PRODUCED WITH THE FOLLOWING SECURITY MEASURES: SPECIAL DOCUMENT PAPER, INK SCREENS, WATERMARK, BACKGROUND DESIGN, HOLOGRAM AND OTHER SECURITY FEATURES NOT LISTED AND DO EXCEED DOCUMENT SECURITY INDUSTRY GUIDELINES.

For terms & conditions and to verify this report, please visit [www.igi.org](http://www.igi.org)

### IGI LABORATORY GROWN DIAMOND ID REPORT

January 30, 2023  
IGI Report Number **LG566331197**  
**CUT CORNERED RECTANGULAR  
MODIFIED BRILLIANT**  
**5.97 X 4.58 X 3.11 MM**  
Carat Weight 0.75 CARAT  
Color Grade D  
Clarity Grade SI 1  
Polish EXCELLENT  
Symmetry EXCELLENT  
Fluorescence NONE  
Inscription(s) LABGROWN (IGI) LG566331197

Comments: As Grown - No indication of post-growth treatment. This Laboratory Grown Diamond was created by High Pressure High Temperature (HPHT) growth process. Type II