



**INTERNATIONAL
GEMOLOGICAL
INSTITUTE**

ELECTRONIC COPY

**LABORATORY GROWN
DIAMOND REPORT**

LG570350835

**IGI LABORATORY GROWN
DIAMOND ID REPORT**

February 21, 2023
IGI Report Number **LG570350835**
EMERALD CUT
5.75 X 4.14 X 2.84 MM
Carat Weight 0.64 CARAT
Color Grade E
Clarity Grade VVS 1
Polish EXCELLENT
Symmetry VERY GOOD
Fluorescence NONE
Inscription(s) LG570350835

Comments: As Grown - No indication of post-growth treatment. This Laboratory Grown Diamond was created by High Pressure High Temperature (HPHT) growth process. Type II

LABORATORY GROWN DIAMOND REPORT

IGI LABORATORY GROWN DIAMOND IDENTIFICATION REPORT

February 21, 2023
IGI Report Number LG570350835
Description LABORATORY GROWN DIAMOND
Shape and Cutting Style EMERALD CUT
Measurements 5.75 X 4.14 X 2.84 MM

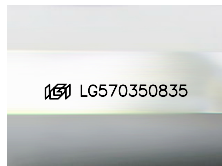
GRADING RESULTS

Carat Weight 0.64 CARAT
Color Grade E
Clarity Grade VVS 1

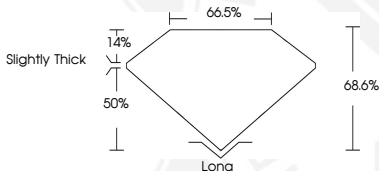
ADDITIONAL GRADING INFORMATION

Polish EXCELLENT
Symmetry VERY GOOD
Fluorescence NONE
Inscription(s) LG570350835

Comments: As Grown - No indication of post-growth treatment. This Laboratory Grown Diamond was created by High Pressure High Temperature (HPHT) growth process. Type II



Sample Image Used



**IGI LABORATORY GROWN
DIAMOND ID REPORT**

February 21, 2023
IGI Report Number **LG570350835**
EMERALD CUT
5.75 X 4.14 X 2.84 MM
Carat Weight 0.64 CARAT
Color Grade E
Clarity Grade VVS 1
Polish EXCELLENT
Symmetry VERY GOOD
Fluorescence NONE
Inscription(s) LG570350835

Comments: As Grown - No indication of post-growth treatment. This Laboratory Grown Diamond was created by High Pressure High Temperature (HPHT) growth process. Type II



THIS DOCUMENT WAS PRODUCED WITH THE FOLLOWING SECURITY MEASURES: SPECIAL DOCUMENT PAPER, INK SCREENS, WATERMARK, BACKGROUND DESIGN, HOLOGRAM AND OTHER SECURITY FEATURES NOT LISTED AND DO EXCEED DOCUMENT SECURITY INDUSTRY GUIDELINES.

For terms & conditions and to verify this report, please visit www.igi.org