



# INTERNATIONAL GEMOLOGICAL INSTITUTE

ELECTRONIC COPY

## LABORATORY GROWN DIAMOND REPORT

LG577392970

### LABORATORY GROWN DIAMOND REPORT

#### IGI LABORATORY GROWN DIAMOND IDENTIFICATION REPORT

April 25, 2023  
IGI Report Number LG577392970  
Description LABORATORY GROWN DIAMOND  
Shape and Cutting Style ROUND BRILLIANT  
Measurements 5.78 - 5.81 X 3.52 MM

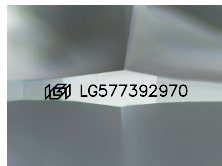
#### GRADING RESULTS

Carat Weight 0.73 CARAT  
Color Grade D  
Clarity Grade SI 1  
Cut Grade EXCELLENT

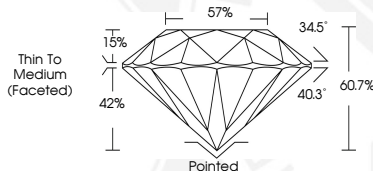
#### ADDITIONAL GRADING INFORMATION

Polish VERY GOOD  
Symmetry EXCELLENT  
Fluorescence NONE  
Inscription(s) IGI LG577392970

Comments: As Grown - No indication of post-growth treatment.  
This Laboratory Grown Diamond was created by High Pressure High Temperature (HPHT) growth process.  
Type II



Sample Image Used



#### IGI LABORATORY GROWN DIAMOND ID REPORT

April 25, 2023  
IGI Report Number LG577392970  
ROUND BRILLIANT  
5.78 - 5.81 X 3.52 MM  
Carat Weight 0.73 CARAT  
Color Grade D  
Clarity Grade SI 1  
Cut Grade EXCELLENT  
Polish VERY GOOD  
Symmetry EXCELLENT  
Fluorescence NONE  
Inscription(s) IGI LG577392970

Comments: As Grown - No indication of post-growth treatment. This Laboratory Grown Diamond was created by High Pressure High Temperature (HPHT) growth process. Type II

#### IGI LABORATORY GROWN DIAMOND ID REPORT

April 25, 2023  
IGI Report Number LG577392970  
ROUND BRILLIANT  
5.78 - 5.81 X 3.52 MM  
Carat Weight 0.73 CARAT  
Color Grade D  
Clarity Grade SI 1  
Cut Grade EXCELLENT  
Polish VERY GOOD  
Symmetry EXCELLENT  
Fluorescence NONE  
Inscription(s) IGI LG577392970

Comments: As Grown - No indication of post-growth treatment. This Laboratory Grown Diamond was created by High Pressure High Temperature (HPHT) growth process. Type II



THIS DOCUMENT WAS PRODUCED WITH THE FOLLOWING SECURITY MEASURES: SPECIAL DOCUMENT PAPER, INK SCREENS, WATERMARK, BACKGROUND DESIGN, HOLOGRAM AND OTHER SECURITY FEATURES NOT LISTED AND DO EXCEED DOCUMENT SECURITY INDUSTRY GUIDELINES.

For terms & conditions and to verify this report, please visit [www.igi.org](http://www.igi.org)