



**ELECTRONIC COPY**

## LABORATORY GROWN DIAMOND REPORT

|                         |                             |
|-------------------------|-----------------------------|
| December 8, 2023        |                             |
| IGI Report Number       | LG611370161                 |
| Description             | LABORATORY GROWN<br>DIAMOND |
| Shape and Cutting Style | SQUARE CUSHION BRILLIANT    |
| Measurements            | 6.82 X 6.74 X 4.58 MM       |

## GRADING RESULTS

|               |                     |
|---------------|---------------------|
| Carat Weight  | 1.56 CARAT          |
| Color Grade   | G                   |
| Clarity Grade | INTERNALLY FLAWLESS |
| Cut Grade     | EXCELLENT           |

### ADDITIONAL GRADING INFORMATION

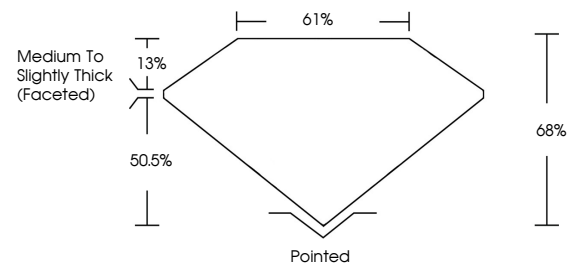
|                |                |
|----------------|----------------|
| Polish         | EXCELLENT      |
| Symmetry       | EXCELLENT      |
| Fluorescence   | NONE           |
| Inscription(s) | 15 LG611370161 |

Comments: As Grown - No indication of post-growth treatment.  
This Laboratory Grown Diamond was created by High Pressure High Temperature (HPHT) growth process.  
Type II  
Faint Blue

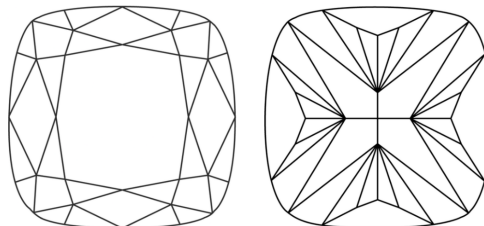
## LABORATORY GROWN DIAMOND REPORT

LG611370161  
Report verification at [igi.org](https://igi.org)

## PROPORTIONS



## CLARITY CHARACTERISTICS



### KEY TO SYMBOLS

Red symbols indicate internal characteristics.  
Green symbols indicate external characteristics.

LABORATORY GROWN  
DIAMOND REPORT

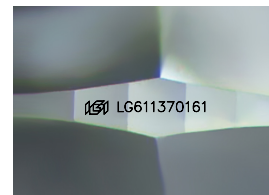
## GRADING SCALES

## CLARITY

| IF                  | VVS <sup>1-2</sup>          | VS <sup>1-2</sup>      | SI <sup>1-2</sup> | I <sup>1-3</sup> |
|---------------------|-----------------------------|------------------------|-------------------|------------------|
| Internally Flawless | Very Very Slightly Included | Very Slightly Included | Slightly Included | Included         |

**COLOR**

D E F G H I J Faint Very Light Light



Sample Image Used



© IGI 2020, International Gemological Institute

FD - 10 20



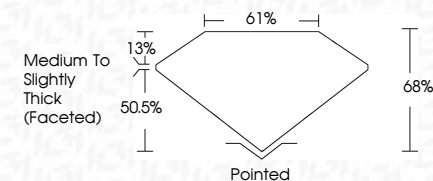
THIS DOCUMENT WAS PRODUCED WITH THE FOLLOWING SECURITY MEASURES: SPECIAL DOCUMENT PAPER, INK SCREENS, WATERMARK, BACKGROUND DESIGNS, HOLOGRAM AND OTHER SECURITY FEATURES NOT LISTED AND DO EXCEED DOCUMENT SECURITY INDUSTRY GUIDELINES

## LABORATORY GROWN DIAMOND REPORT


|                         |                             |
|-------------------------|-----------------------------|
| December 8, 2023        |                             |
| IGI Report Number       | LG611370161                 |
| Description             | LABORATORY GROWN<br>DIAMOND |
| Shape and Cutting Style | SQUARE CUSHION BRILLIANT    |
| Measurements            | 6.82 X 6.74 X 4.58 MM       |

## GRADING RESULTS

|               |                     |
|---------------|---------------------|
| Carat Weight  | 1.56 CARAT          |
| Color Grade   | G                   |
| Clarity Grade | INTERNALLY FLAWLESS |
| Cut Grade     | EXCELLENT           |



### ADDITIONAL GRADING INFORMATION

|  |   |
|--|---|
| Polish   | EXCELLENT   |
| Symmetry   | EXCELLENT   |
| Fluorescence   | NONE  |
| Inscription(s)   |  LG611370161 |
| Comments: As Grown - No indication of post-growth treatment.                                       |   |
| This Laboratory Grown Diamond was created by High Pressure High Temperature (HPHT) growth process. |   |
| Type II  |   |
| Faint Blue   |   |



December 8, 2023  
 IGI Report No LG611  
 SQUARE CUSHION RE

[illegible]

**Comments:**  
As Grown - No indication of post-growth treatment  
This Laboratory Grown Diamond was created by High Pressure High Temperature (HPHT) growth process.  
Type II  
Exhibit B10

**www.igi.org**