



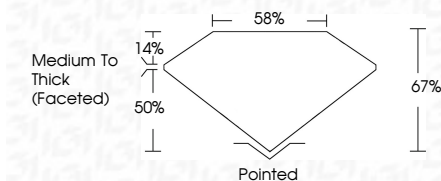
**ELECTRONIC COPY**

LG628409406  
Report verification at igi.org



April 11, 2024  
IGI Report Number **LG628409406**  
Description **LABORATORY GROWN DIAMOND**  
Shape and Cutting Style **CUSHION BRILLIANT**  
Measurements **8.01 X 6.75 X 4.52 MM**

**GRADING RESULTS**  
Carat Weight **2.00 CARATS**  
Color Grade **FANCY YELLOW**  
Clarity Grade **INTERNALLY FLAWLESS**  
Cut Grade **VERY GOOD**



**ADDITIONAL GRADING INFORMATION**  
Polish **EXCELLENT**  
Symmetry **EXCELLENT**  
Fluorescence **NONE**  
Inscription(s) **IGI LG628409406**  
Comments: As Grown - No indication of post-growth treatment.  
This Laboratory Grown Diamond was created by High Pressure High Temperature (HPHT) growth process.



April 11, 2024  
IGI Report No **LG628409406**  
**CUSHION BRILLIANT**  
8.01 X 6.75 X 4.52 MM  
Carat Weight **2.00 CARATS**  
Color Grade **FANCY YELLOW**  
Clarity Grade **IF**  
Cut Grade **VERY GOOD**  
Depth **67%**  
Table **50%**  
Girdle **Medium To Thick (Faceted)**  
Culet **Pointed**  
Polish **EXCELLENT**  
Symmetry **EXCELLENT**  
Fluorescence **NONE**  
Inscriptions(s) **IGI LG628409406**  
Comments: As Grown - No indication of post-growth treatment.  
This Laboratory Grown Diamond was created by High Pressure High Temperature (HPHT) growth process.

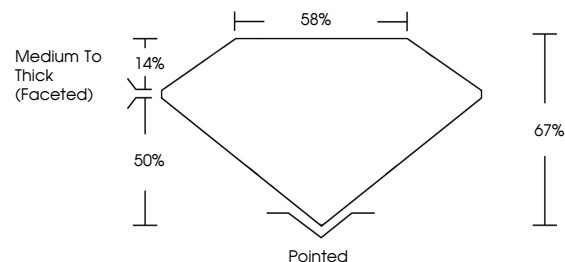
April 11, 2024  
IGI Report Number **LG628409406**  
Description **LABORATORY GROWN DIAMOND**  
Shape and Cutting Style **CUSHION BRILLIANT**  
Measurements **8.01 X 6.75 X 4.52 MM**

**GRADING RESULTS**  
Carat Weight **2.00 CARATS**  
Color Grade **FANCY YELLOW**  
Clarity Grade **INTERNALLY FLAWLESS**  
Cut Grade **VERY GOOD**

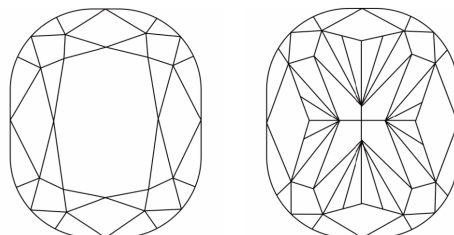
**ADDITIONAL GRADING INFORMATION**  
Polish **EXCELLENT**  
Symmetry **EXCELLENT**  
Fluorescence **NONE**  
Inscription(s) **IGI LG628409406**

Comments: As Grown - No indication of post-growth treatment.  
This Laboratory Grown Diamond was created by High Pressure High Temperature (HPHT) growth process.

**PROPORTIONS**

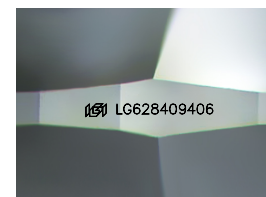


**CLARITY CHARACTERISTICS**



**KEY TO SYMBOLS**

Red symbols indicate internal characteristics.  
Green symbols indicate external characteristics.



Sample Image Used

**COLOR**

D E F G H I J Faint Very Light Light

**CLARITY**

IF	VS <sup>1-2</sup>	VS <sup>1-2</sup>	SI <sup>1-2</sup>	I <sup>1-3</sup>
Internally Flawless	Very Very Slightly Included	Very Slightly Included	Slightly Included	Included

