



# INTERNATIONAL GEMOLOGICAL INSTITUTE

ELECTRONIC COPY

LG649457767



August 30, 2024

IGI Report Number **LG649457767**  
CUSHION BRILLIANT  
LABORATORY GROWN DIAMOND  
5.21 X 4.20 X 2.96 MM

Carat Weight **0.53 CARAT**  
Color Grade **D**  
Clarity Grade **VVS 2**  
Cut Grade **VERY GOOD**  
Polish **EXCELLENT**  
Symmetry **VERY GOOD**  
Fluorescence **NONE**  
Inscription(s) **IGI LG649457767**

Comments: As Grown - No indication of post-growth treatment. This Laboratory Grown Diamond was created by High Pressure High Temperature (HPHT) growth process. Type II

## LABORATORY GROWN DIAMOND REPORT

August 30, 2024  
IGI Report Number **LG649457767**  
Description **LABORATORY GROWN DIAMOND**  
Shape and Cutting Style **CUSHION BRILLIANT**  
Measurements **5.21 X 4.20 X 2.96 MM**

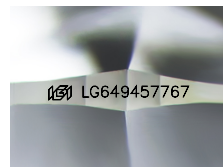
### GRADING RESULTS

Carat Weight **0.53 CARAT**  
Color Grade **D**  
Clarity Grade **VVS 2**  
Cut Grade **VERY GOOD**

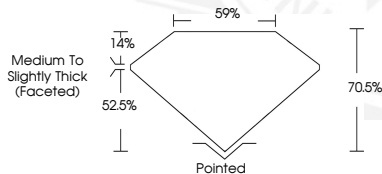
### ADDITIONAL GRADING INFORMATION

Polish **EXCELLENT**  
Symmetry **VERY GOOD**  
Fluorescence **NONE**  
Inscription(s) **IGI LG649457767**

Comments: As Grown - No indication of post-growth treatment. This Laboratory Grown Diamond was created by High Pressure High Temperature (HPHT) growth process. Type II



Sample Image Used



August 30, 2024

IGI Report Number **LG649457767**  
CUSHION BRILLIANT  
LABORATORY GROWN DIAMOND  
5.21 X 4.20 X 2.96 MM

Carat Weight **0.53 CARAT**  
Color Grade **D**  
Clarity Grade **VVS 2**  
Cut Grade **VERY GOOD**  
Polish **EXCELLENT**  
Symmetry **VERY GOOD**  
Fluorescence **NONE**  
Inscription(s) **IGI LG649457767**

Comments: As Grown - No indication of post-growth treatment. This Laboratory Grown Diamond was created by High Pressure High Temperature (HPHT) growth process. Type II



THIS DOCUMENT WAS PRODUCED WITH THE FOLLOWING SECURITY MEASURES: SPECIAL DOCUMENT PAPER, INK SCREENS, WATERMARK, BACKGROUND DESIGNS, HOLOGRAM AND OTHER SECURITY FEATURES NOT LISTED AND DO EXCEED DOCUMENT SECURITY INDUSTRY GUIDELINES.

For terms & conditions and to verify this report, please visit [www.igi.org](http://www.igi.org)