



**INTERNATIONAL  
GEMOLOGICAL  
INSTITUTE**

**Electronic COPY**

**LG651437994**



September 6, 2024

IGI Report Number **LG651437994**

**CUSHION BRILLIANT**

**LABORATORY GROWN DIAMOND**

**6.24 X 5.05 X 3.30 MM**

Carat Weight **0.88 CARAT**

Color Grade **F**

Clarity Grade **I.F.**

Cut Grade **EXCELLENT**

Polish **EXCELLENT**

Symmetry **EXCELLENT**

Fluorescence **NONE**

Inscription(s) **IGI LG651437994**

Comments: As Grown - No indication of post-growth treatment. This Laboratory Grown Diamond was created by High Pressure High Temperature (HPHT) growth process. Type II

**LABORATORY GROWN DIAMOND REPORT**

September 6, 2024

IGI Report Number **LG651437994**

Description **LABORATORY GROWN DIAMOND**

Shape and Cutting Style **CUSHION BRILLIANT**

Measurements **6.24 X 5.05 X 3.30 MM**

**GRADING RESULTS**

Carat Weight **0.88 CARAT**

Color Grade **F**

Clarity Grade **INTERNALLY FLAWLESS**

Cut Grade **EXCELLENT**

**ADDITIONAL GRADING INFORMATION**

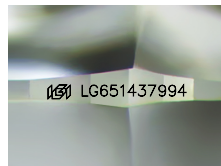
Polish **EXCELLENT**

Symmetry **EXCELLENT**

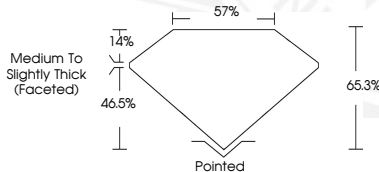
Fluorescence **NONE**

Inscription(s) **IGI LG651437994**

Comments: As Grown - No indication of post-growth treatment. This Laboratory Grown Diamond was created by High Pressure High Temperature (HPHT) growth process. Type II



Sample Image Used



September 6, 2024

IGI Report Number **LG651437994**

**CUSHION BRILLIANT**

**LABORATORY GROWN DIAMOND**

**6.24 X 5.05 X 3.30 MM**

Carat Weight **0.88 CARAT**

Color Grade **F**

Clarity Grade **I.F.**

Cut Grade **EXCELLENT**

Polish **EXCELLENT**

Symmetry **EXCELLENT**

Fluorescence **NONE**

Inscription(s) **IGI LG651437994**

Comments: As Grown - No indication of post-growth treatment. This Laboratory Grown Diamond was created by High Pressure High Temperature (HPHT) growth process. Type II

THIS DOCUMENT WAS PRODUCED WITH THE FOLLOWING SECURITY MEASURES: SPECIAL DOCUMENT PAPER, INK SCREENS, WATERMARK, BACKGROUND DESIGN, HOLOGRAM AND OTHER SECURITY FEATURES NOT LISTED AND DO EXCEED DOCUMENT SECURITY INDUSTRY GUIDELINES.

For terms & conditions and to verify this report, please visit [www.igi.org](http://www.igi.org)