



# INTERNATIONAL GEMOLOGICAL INSTITUTE

ELECTRONIC COPY

LG666410865



November 29, 2024

IGI Report Number LG666410865  
CUT CORNERED RECTANGULAR  
MODIFIED BRILLIANT  
LABORATORY GROWN DIAMOND

6.24 X 4.51 X 3.14 MM  
Carat Weight 0.76 CARAT  
Color Grade D  
Clarity Grade VVS 2  
Cut Grade VERY GOOD  
Polish EXCELLENT  
Symmetry EXCELLENT  
Fluorescence NONE  
Inscription(s) LG666410865

Comments: As Grown - No indication of post-growth treatment. This Laboratory Grown Diamond was created by High Pressure High Temperature (HPHT) growth process. Type II

## LABORATORY GROWN DIAMOND REPORT

November 29, 2024

IGI Report Number LG666410865

Description LABORATORY GROWN DIAMOND

Shape and Cutting Style CUT CORNERED RECTANGULAR MODIFIED  
BRILLIANT

Measurements 6.24 X 4.51 X 3.14 MM

### GRADING RESULTS

Carat Weight 0.76 CARAT

Color Grade D

Clarity Grade VVS 2

Cut Grade VERY GOOD

### ADDITIONAL GRADING INFORMATION

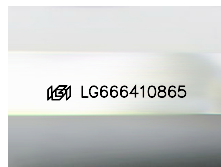
Polish EXCELLENT

Symmetry EXCELLENT

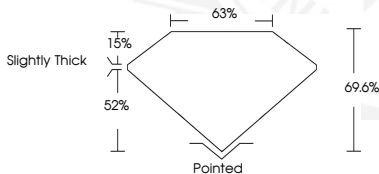
Fluorescence NONE

Inscription(s) LG666410865

Comments: As Grown - No indication of post-growth treatment.  
This Laboratory Grown Diamond was created by High Pressure High  
Temperature (HPHT) growth process.  
Type II



Sample Image Used



November 29, 2024

IGI Report Number LG666410865  
CUT CORNERED RECTANGULAR  
MODIFIED BRILLIANT  
LABORATORY GROWN DIAMOND

6.24 X 4.51 X 3.14 MM  
Carat Weight 0.76 CARAT  
Color Grade D  
Clarity Grade VVS 2  
Cut Grade VERY GOOD  
Polish EXCELLENT  
Symmetry EXCELLENT  
Fluorescence NONE  
Inscription(s) LG666410865

Comments: As Grown - No indication of post-growth treatment. This Laboratory Grown Diamond was created by High Pressure High Temperature (HPHT) growth process. Type II



THIS DOCUMENT WAS PRODUCED WITH THE FOLLOWING SECURITY MEASURES: SPECIAL DOCUMENT PAPER, INK SCREENS, WATERMARK, BACKGROUND DESIGNS, HOLOGRAM AND OTHER SECURITY FEATURES NOT LISTED AND DO EXCEED DOCUMENT SECURITY INDUSTRY GUIDELINES.

For terms & conditions and to verify this report, please visit [www.igi.org](http://www.igi.org)