



INTERNATIONAL GEMOLOGICAL INSTITUTE

ELECTRONIC COPY

LG669463402

LABORATORY GROWN DIAMOND REPORT

December 19, 2024

IGI Report Number

LG669463402

Description

LABORATORY GROWN DIAMOND

Shape and Cutting Style

ROUND BRILLIANT

Measurements

4.92 - 4.96 X 3.02 MM

GRADING RESULTS

Carat Weight

0.45 CARAT

Color Grade

F

Clarity Grade

INTERNALLY FLAWLESS

Cut Grade

IDEAL

ADDITIONAL GRADING INFORMATION

Polish

EXCELLENT

Symmetry

EXCELLENT

Fluorescence

NONE

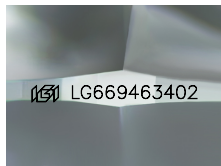
Inscription(s)

IGI LG669463402

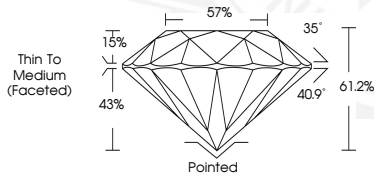
Comments: As Grown - No indication of post-growth treatment.

This Laboratory Grown Diamond was created by High Pressure High Temperature (HPHT) growth process.

Type II



Sample Image Used



December 19, 2024

IGI Report Number LG669463402

ROUND BRILLIANT

LABORATORY GROWN DIAMOND

4.92 - 4.96 X 3.02 MM

Carat Weight 0.45 CARAT

Color Grade F

Clarity Grade I.F.

Cut Grade IDEAL

Polish EXCELLENT

Symmetry EXCELLENT

Fluorescence NONE

Inscription(s) IGI LG669463402

Comments: As Grown - No indication of post-growth treatment. This Laboratory Grown Diamond was created by High Pressure High Temperature (HPHT) growth process. Type II



December 19, 2024

IGI Report Number LG669463402

ROUND BRILLIANT

LABORATORY GROWN DIAMOND

4.92 - 4.96 X 3.02 MM

Carat Weight 0.45 CARAT

Color Grade F

Clarity Grade I.F.

Cut Grade IDEAL

Polish EXCELLENT

Symmetry EXCELLENT

Fluorescence NONE

Inscription(s) IGI LG669463402

Comments: As Grown - No indication of post-growth treatment. This Laboratory Grown Diamond was created by High Pressure High Temperature (HPHT) growth process. Type II



THIS DOCUMENT WAS PRODUCED WITH THE FOLLOWING SECURITY MEASURES: SPECIAL DOCUMENT PAPER, INK SCREENS, WATERMARK, BACKGROUND DESIGNS, HOLOGRAM AND OTHER SECURITY FEATURES NOT LISTED AND DO EXCEED DOCUMENT SECURITY INDUSTRY GUIDELINES.

For terms & conditions and to verify this report, please visit www.igi.org