



# INTERNATIONAL GEMOLOGICAL INSTITUTE

ELECTRONIC COPY

LG670469543



December 21, 2024

IGI Report Number LG670469543  
ROUND BRILLIANT  
LABORATORY GROWN DIAMOND  
4.99 - 5.02 X 3.06 MM

Carat Weight 0.46 CARAT  
Color Grade D  
Clarity Grade VVS 1  
Cut Grade IDEAL  
Polish EXCELLENT  
Symmetry EXCELLENT  
Fluorescence NONE  
Inscription(s) IGI LG670469543

Comments: As Grown - No indication of post-growth treatment. This Laboratory Grown Diamond was created by High Pressure High Temperature (HPHT) growth process. Type II

## LABORATORY GROWN DIAMOND REPORT

December 21, 2024

IGI Report Number LG670469543

Description LABORATORY GROWN DIAMOND

Shape and Cutting Style ROUND BRILLIANT

Measurements 4.99 - 5.02 X 3.06 MM

### GRADING RESULTS

Carat Weight 0.46 CARAT

Color Grade D

Clarity Grade VVS 1

Cut Grade IDEAL

### ADDITIONAL GRADING INFORMATION

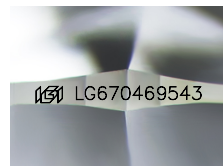
Polish EXCELLENT

Symmetry EXCELLENT

Fluorescence NONE

Inscription(s) IGI LG670469543

Comments: As Grown - No indication of post-growth treatment. This Laboratory Grown Diamond was created by High Pressure High Temperature (HPHT) growth process. Type II



Sample Image Used

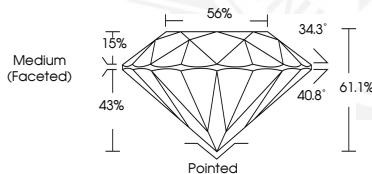


December 21, 2024

IGI Report Number LG670469543  
ROUND BRILLIANT  
LABORATORY GROWN DIAMOND  
4.99 - 5.02 X 3.06 MM

Carat Weight 0.46 CARAT  
Color Grade D  
Clarity Grade VVS 1  
Cut Grade IDEAL  
Polish EXCELLENT  
Symmetry EXCELLENT  
Fluorescence NONE  
Inscription(s) IGI LG670469543

Comments: As Grown - No indication of post-growth treatment. This Laboratory Grown Diamond was created by High Pressure High Temperature (HPHT) growth process. Type II



THIS DOCUMENT WAS PRODUCED WITH THE FOLLOWING SECURITY MEASURES: SPECIAL DOCUMENT PAPER, INK SCREENS, WATERMARK, BACKGROUND DESIGNS, HOLOGRAM AND OTHER SECURITY FEATURES NOT LISTED AND DO EXCEED DOCUMENT SECURITY INDUSTRY GUIDELINES.

For terms & conditions and to verify this report, please visit [www.igi.org](http://www.igi.org)